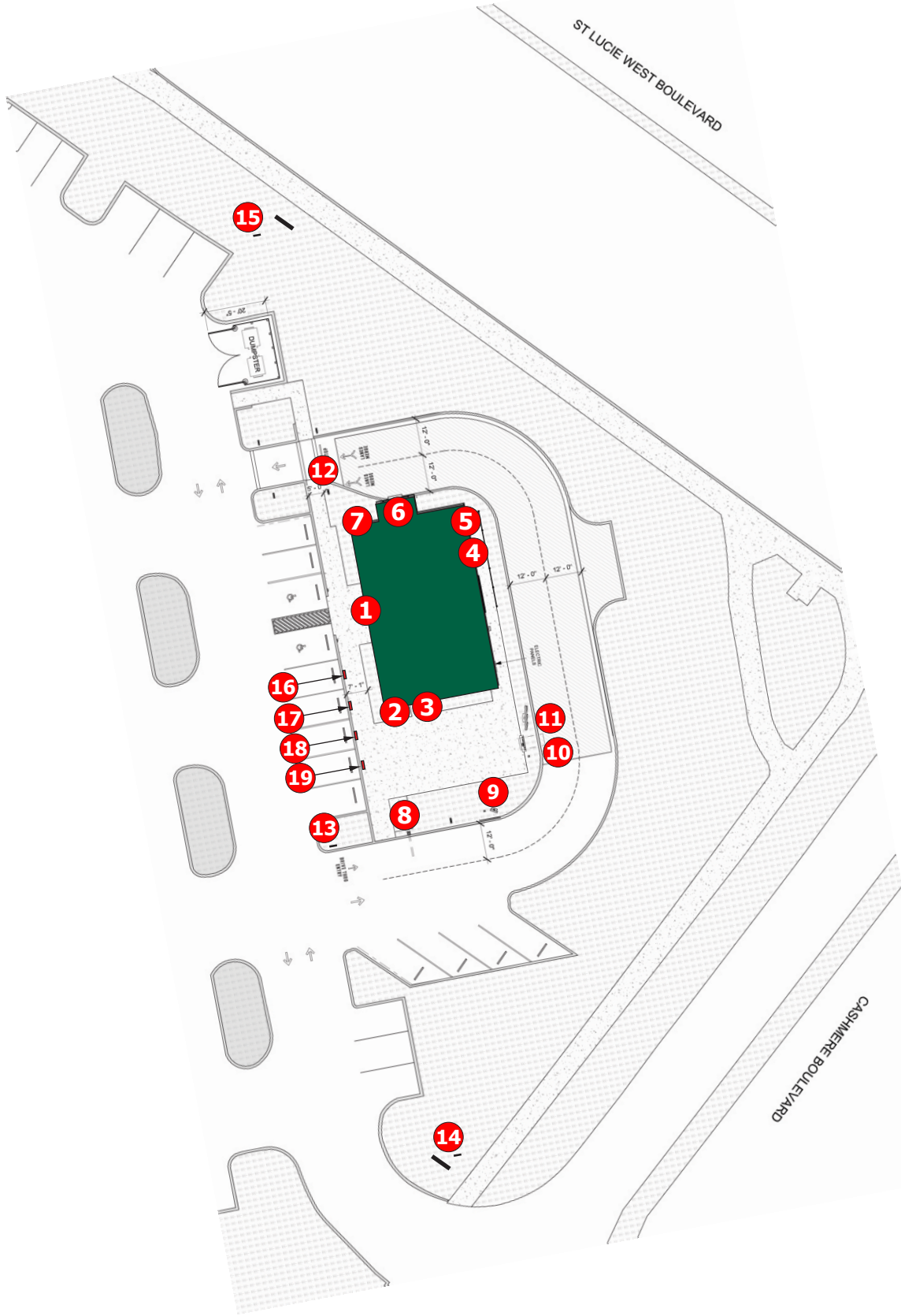




SITE PLAN
Not to Scale



STARBUCKS

1 Southwest Elevation - Flush Mounted Channels



DRIVE THRU

2 Southeast Elevation
Siren Logo

3 Southeast Elevation
DT Channel Letters



DRIVE THRU

4 Northeast Elevation
Siren Logo

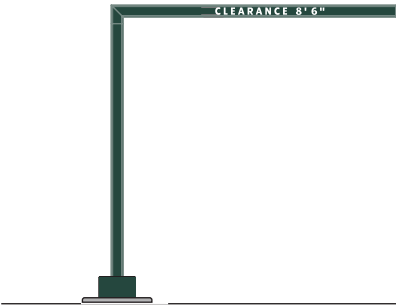
5 Northeast Elevation
DT Channel Letters



DRIVE THRU

6 Northwest Elevation
Siren Logo

7 Northwest Elevation
DT Channel Letters



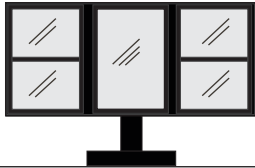
8 Drive Thru Clearance Sign



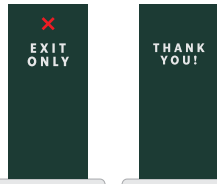
9 Pre Menu Board



10 DOS with Canopy



11 5-Panel Menu Board



12 Thank You/Exit Directional



13 Directional Sign



16 17 18 19 Mobile Order Pick Up Sign



14 Monument Sign



15 Monument Sign



SIDE VIEW






1 **SB-CL-RMT-G-16**
Scale: 1/2" = 1'-0"

SCOPE OF WORK:
Manufacture and install internally illuminated channel letters flush mounted to fascia.

DESCRIPTION:

- Internally illuminated channel letters with shoulder cut drop in faces and painted satin black returns.
- Faces to be 1/2" 2406 white acrylic with vinyl overlay.
- 1/4" drain holes located at the bottom of letters as required by UL 48 for electric signs.
- Drain holes to be covered with drain hole covers to reduce light leaks.

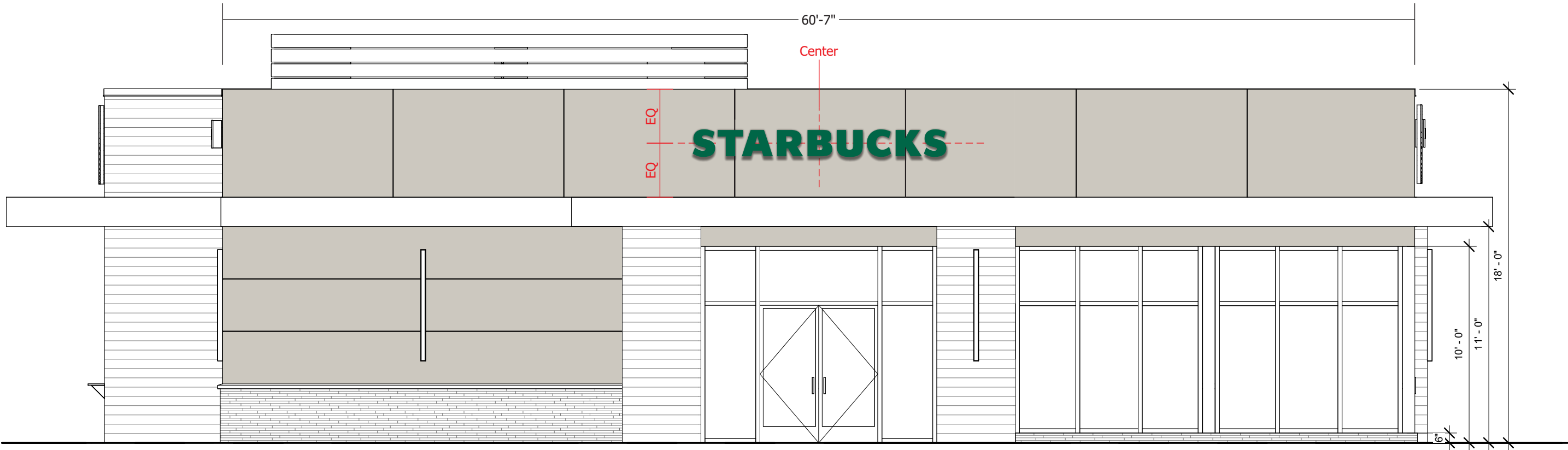
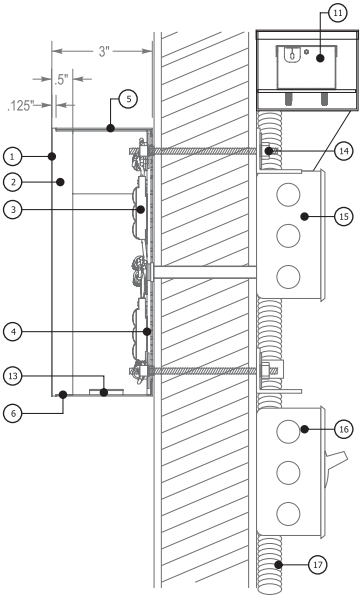
COLOR SCHEDULE:

-  Returns Pantone 419 Black (RAL 7021M) satin
-  2406 White acrylic
-  3M 3630-126 Dark Emerald Green

SQUARE FOOTAGE:
Allowed: 2160 sf leased space = Max logo height of 36"
Max sf allowance = 200 sf
Proposed Square Footage = 17.18 sf

1	vinyl applied to first surface (green lettersets only)
2	acrylic face shoulder routed to fit inside returns
3	6500k white LED
4	3mm ACM back
5	.040 aluminum return
6	#4 1/4 undercut countersunk phillips flat head screw
7	NA
8	NA
9	NA
10	NA
11	power supply
12	NA
13	weep hole cover (under side painted black)
14	mounting varies upon wall condition and material
15	junction box
16	disconnect switch
17	primary power source

ELECTRICAL NOTES	
1.	All materials and fasteners meet 3004.4
2.	All electrical components are UL listed, labeled and approved.
3.	Sign grounded according to NEC 6007.7
4.	Signs manufactured and listed NEC 600.3 and marked per NEC 600.4.
5.	All branch circuits per NEC 600 .5(B).1 or (B).2.
6.	All Signs controlled by photocell or time clock per FBC 13-415, (ABC).1.4.
7.	One visible 20 amp disconnect per sign per circuit per NEC 600.6(A).1



SOUTHWEST ELEVATION - Scale: 3/16" = 1'-0"



National Headquarters: 1077 West Blue Heron Blvd.
West Palm Beach, Florida 33404
800.772.7932
www.atlasbtw.com

Revisions:	
01/27/25js rev per markup	...
...	...
...	...
...	...
...	...

S01

PM: Mark B.	Address: #81616 - St Lucie West Blvd.
Drawn By: JS	City State: Port St. Lucie, FL 34986
Date: 01/22/2025	Drawing Number: 169125-S01



Manufacture and install S/F internally illuminated wall sign.

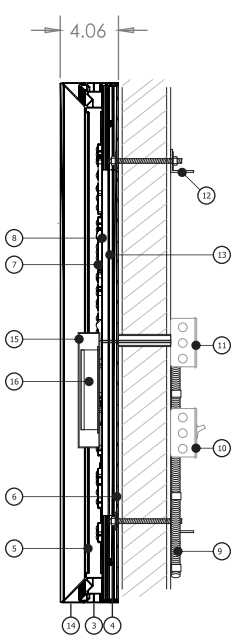
- Illuminated Wall Sign
- Flex Face with Bleed Face Extrusion Construction
- Illuminated with LED
- Face and Return Remove at Once for Service Access

COLORS:

- Face to be 3M white Panaflex substrate
- Vinyl (first surface) 3M 3630-126 Dark Emerald Green
- Returns Painted Pantone 419 Black (satin finish)

SQUARE FOOTAGE:

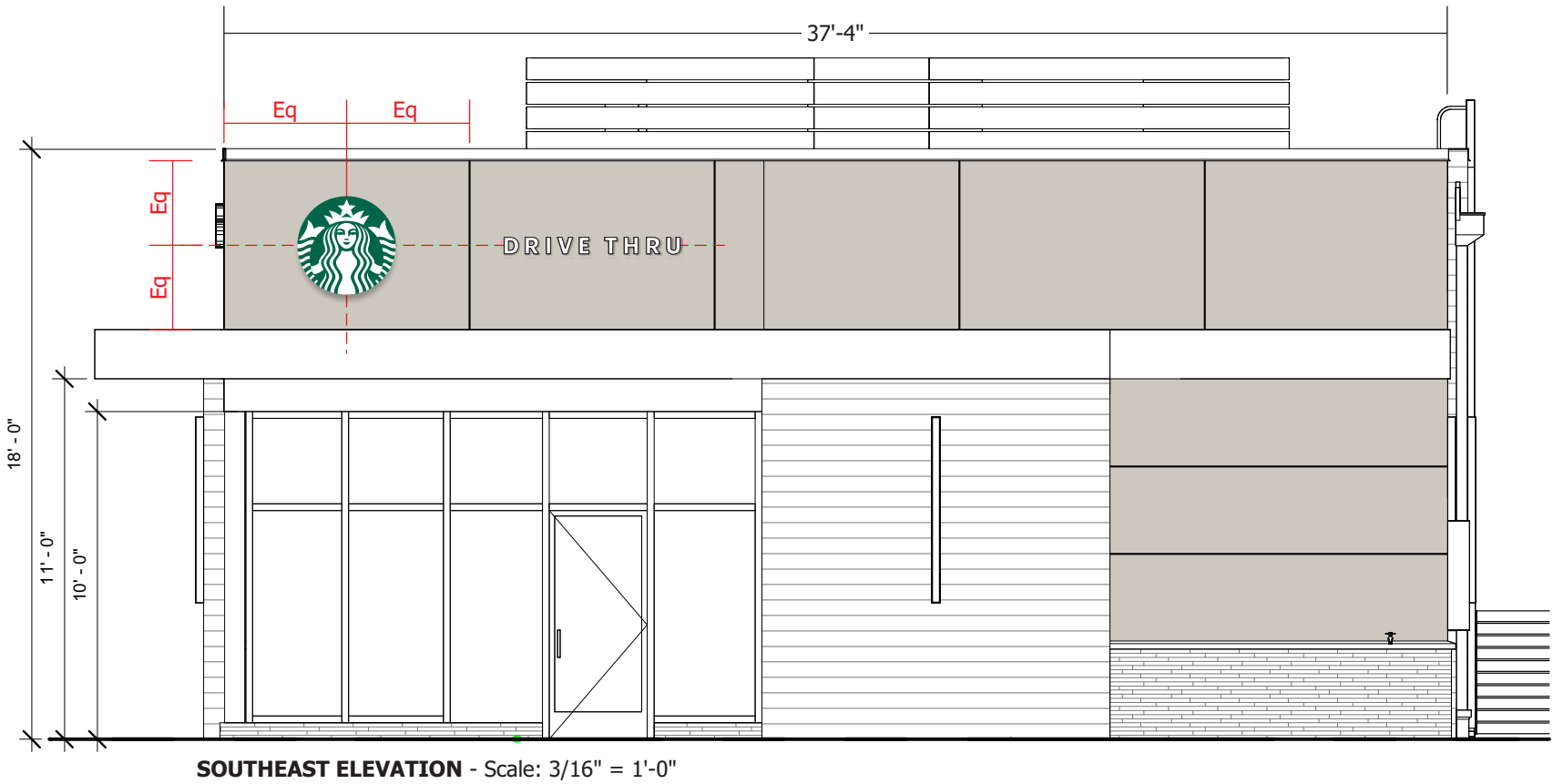
Allowed: 2160 sf leased space = Max logo height of 36"
Max sf allowance = 200 sf
Proposed: 7.06 sf



1	3M vinyl applied to first surface
2	3M Panaflex III flex face material
3	#8 x .5 pan head screw
4	#8 x .75 TEK countersunk screw
5	Sign Comp #2104 retro frame (bleed face) extrusion
6	.125 thick aluminum back
7	Sloan Prism Enlighten #6500 white 12 volt
8	.063 thick aluminum baffle
9	primary power
10	listed disconnect switch
11	junction box
12	mounting varies upon size, wall type & engineering
13	1 x 1 aluminum tube stand off
14	Sign Comp #2123 retro frame cover extrusion
15	power supply box
16	power supply

ELECTRICAL NOTES

1. All materials and fasteners meet 3004.4
2. All electrical components are UL listed, labeled and approved.
3. Sign grounded according to NEC 6007.7
4. Signs manufactured and listed NEC 600.3 and marked per NEC 600.4.
5. All branch circuits per NEC 600 .5(B).1 or (B).2.
6. All Signs controlled by photocell or time clock per FBC 13-415. (ABC).1.4.
7. One visible 20 amp disconnect per sign per circuit per NEC 600.6(A).1

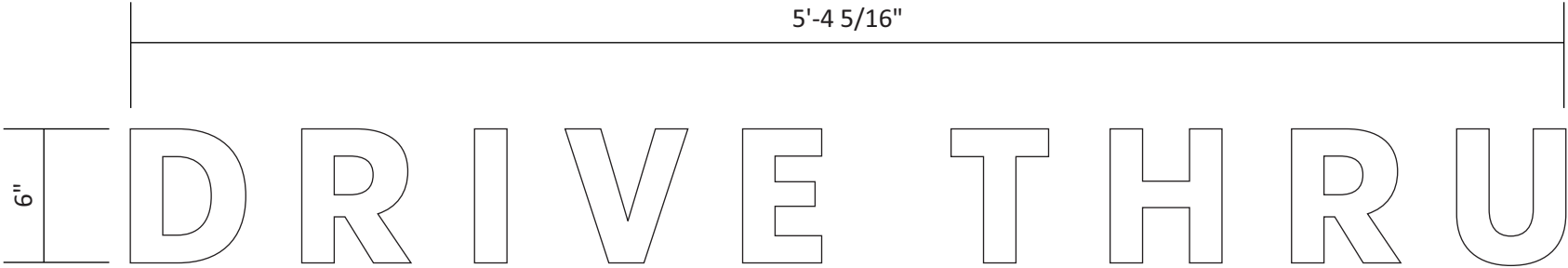


Revisions:	
01/27/25js rev per markup	...
...	...
...	...
...	...
...	...

PM: Mark B.	Address: #81616 - St Lucie West Blvd.
Drawn By: JS	City State: Port St. Lucie, FL 34986
Date: 01/22/2025	Drawing Number: 169125-S02



SIDE VIEW





3 SB-CL-RMT-DT-W-6
Scale: 1 1/2" = 1'-0"

SCOPE OF WORK:
Manufacture and install internally illuminated channel letters flush mounted to fascia.

- DESCRIPTION:**
- Internally illuminated channel letters with shoulder cut drop in faces and painted satin black returns.
 - Faces to be 1/2" 7328 white acrylic.
 - 1/4" drain holes located at the bottom of letter as required by UL 48 for electric signs.
 - Drain holes to be covered with drain hole covers to reduce light leaks.

COLORS:

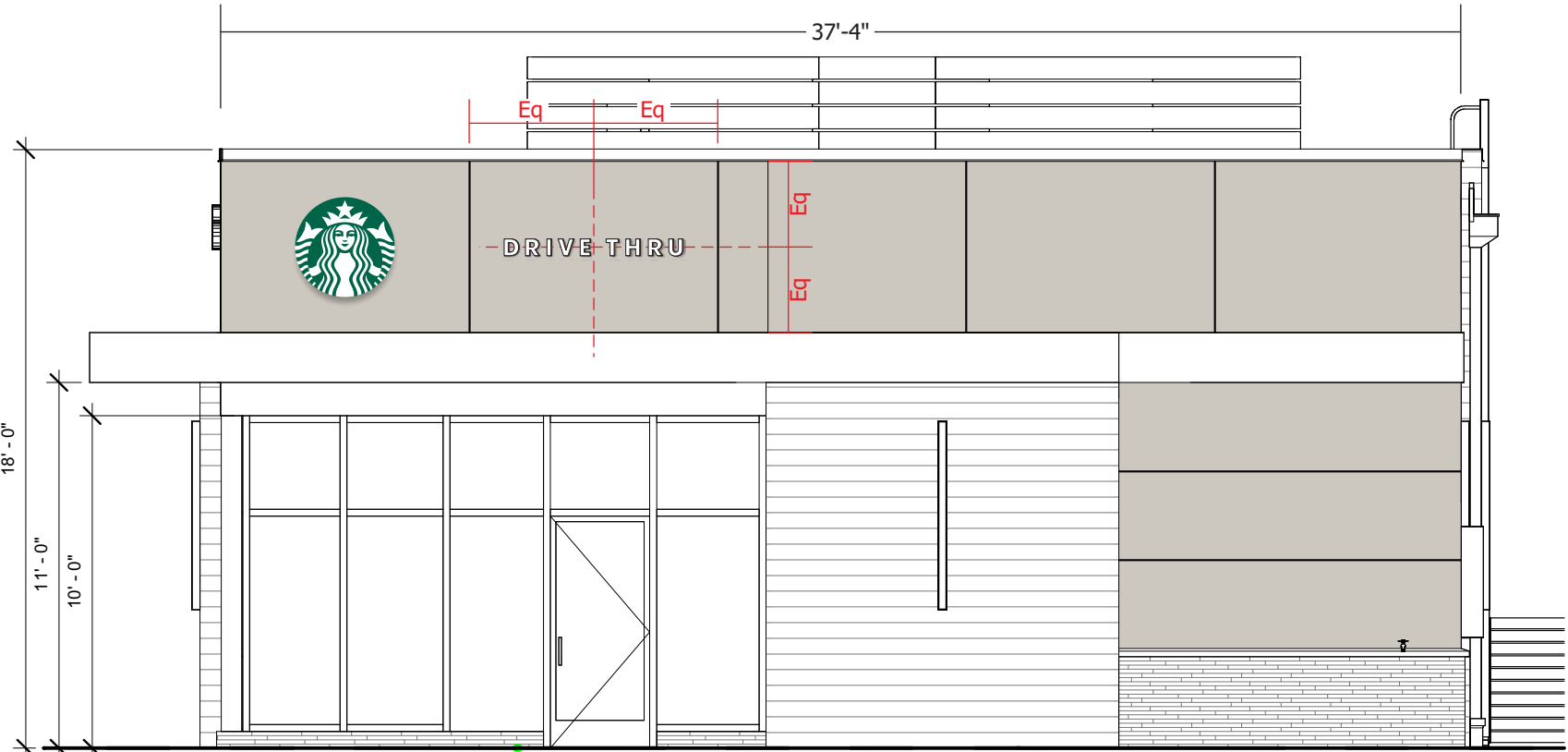
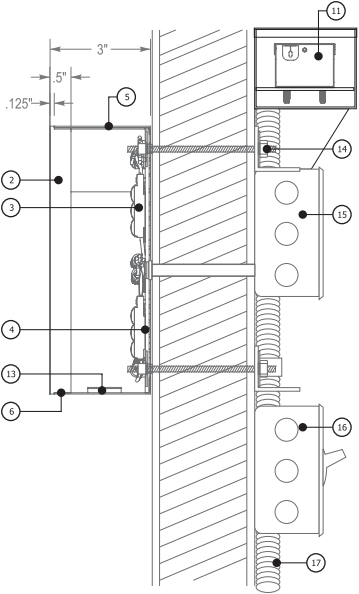
 Faces to be #7328 White Acrylic

 Returns Painted Pantone 419 Black (satin)

SQUARE FOOTAGE:
Allowed: 2160 sf leased space = Max logo height of 36"
Max sf allowance = 200 sf
Proposed: 2.68 sf

1	NA
2	acrylic face shoulder routed to fit inside returns
3	6500k white LED
4	3mm ACM back
5	.040 aluminum return
6	#4 1/4 undercut countersunk phillips flat head screw
7	NA
8	NA
9	NA
10	NA
11	power supply
12	NA
13	weep hole cover (under side painted black)
14	mounting varies upon wall condition and material
15	junction box
16	disconnect switch
17	primary power source

ELECTRICAL NOTES	
1.	All materials and fasteners meet 3004.4
2.	All electrical components are UL listed, labeled and approved.
3.	Sign grounded according to NEC 6007.7
4.	Signs manufactured and listed NEC 600.3 and marked per NEC 600.4.
5.	All branch circuits per NEC 600 .5(B).1 or (B).2.
6.	All Signs controlled by photocell or time clock per FBC 13-415, (ABC).1.4.
7.	One visible 20 amp disconnect per sign per circuit per NEC 600.6(A).1



SOUTHEAST ELEVATION - Scale: 3/16" = 1'-0"

Revisions:	
01/27/25js rev per markup	...
...	...
...	...
...	...
...	...

PM: Mark B.	Address: #81616 - St Lucie West Blvd.
Drawn By: JS	City State: Port St. Lucie, FL 34986
Date: 01/22/2025	Drawing Number: 169125-S03



Manufacture and install S/F internally illuminated wall sign.

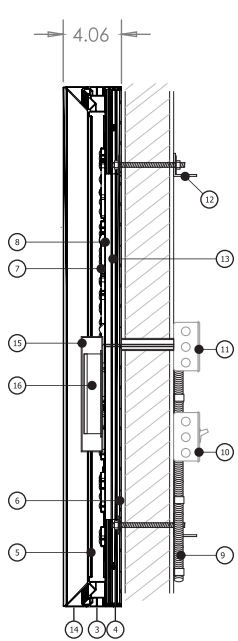
- Illuminated Wall Sign
- Flex Face with Bleed Face Extrusion Construction
- Illuminated with LED
- Face and Return Remove at Once for Service Access

COLORS:

- Face to be 3M white Panaflex substrate
- Vinyl (first surface) 3M 3630-126 Dark Emerald Green
- Returns Painted Pantone 419 Black (satin finish)

SQUARE FOOTAGE:

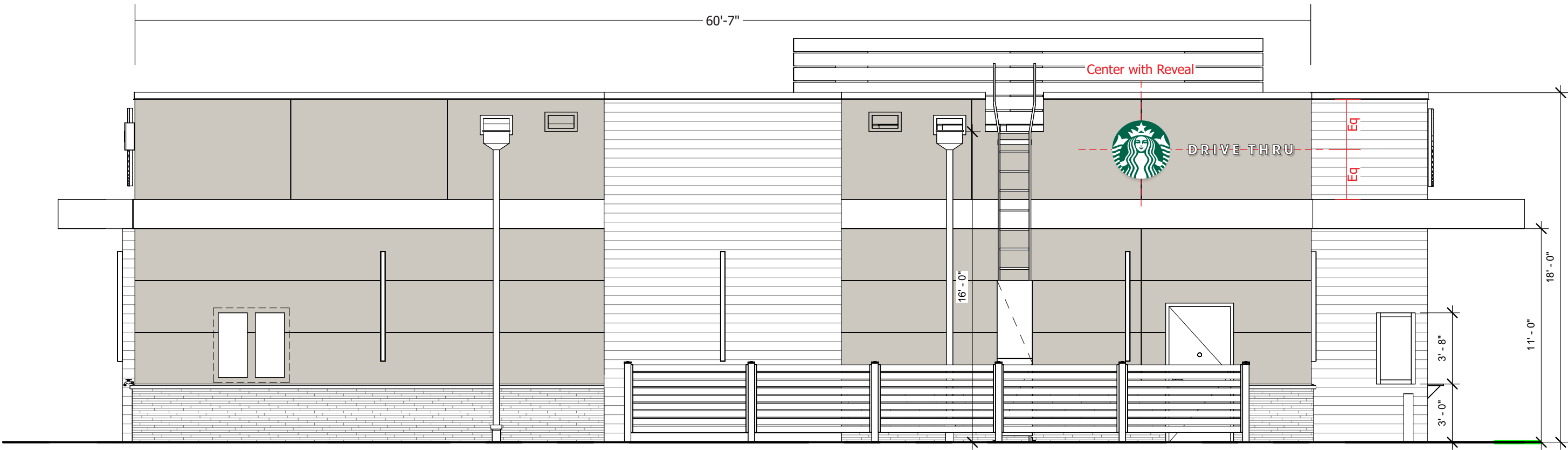
Allowed: 2160 sf leased space = Max logo height of 36"
Max sf allowance = 200 sf
Proposed: 7.06 sf



1	3M vinyl applied to first surface
2	3M Panaflex III flex face material
3	#8 x .5 pan head screw
4	#8 x .75 TEK countersunk screw
5	Sign Comp #2104 retro frame (bleed face) extrusion
6	.125 thick aluminum back
7	Sloan Prism Enlighten #6500 white 12 volt
8	.063 thick aluminum baffle
9	primary power
10	listed disconnect switch
11	junction box
12	mounting varies upon size, wall type & engineering
13	1 x 1 aluminum tube stand off
14	Sign Comp #2123 retro frame cover extrusion
15	power supply box
16	power supply

ELECTRICAL NOTES

1. All materials and fasteners meet 3004.4
2. All electrical components are UL listed, labeled and approved.
3. Sign grounded according to NEC 6007.7
4. Signs manufactured and listed NEC 600.3 and marked per NEC 600.4.
5. All branch circuits per NEC 600 .5(B).1 or (B).2.
6. All Signs controlled by photocell or time clock per FBC 13-415. (ABC).1.4.
7. One visible 20 amp disconnect per sign per circuit per NEC 600.6(A).1



NORTHEAST ELEVATION - Scale: 3/16" = 1'-0"

Revisions:

01/27/25js rev per markup	...
...	...
...	...
...	...
...	...



5 SB-CL-RMT-DT-W-6
Scale: 1 1/2" = 1'-0"

SCOPE OF WORK:

Manufacture and install internally illuminated channel letters mounted on a raceway.

DESCRIPTION:

- Internally illuminated channel letters with shoulder cut drop in faces and painted satin black returns.
- Faces to be 1/2" 7328 white acrylic.
- 1/4" drain holes located at the bottom of letter as required by UL 48 for electric signs.
- Drain holes to be covered with drain hole covers to reduce light leaks.

COLORS:

- Faces to be #7328 White Acrylic
- Returns Painted Pantone 419 Black (satin)

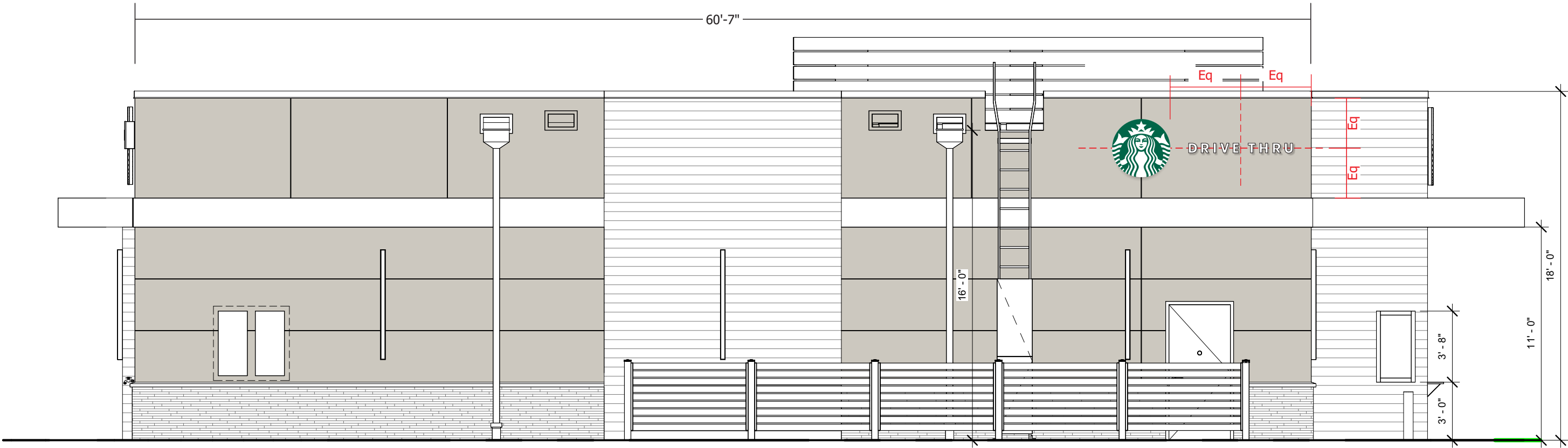
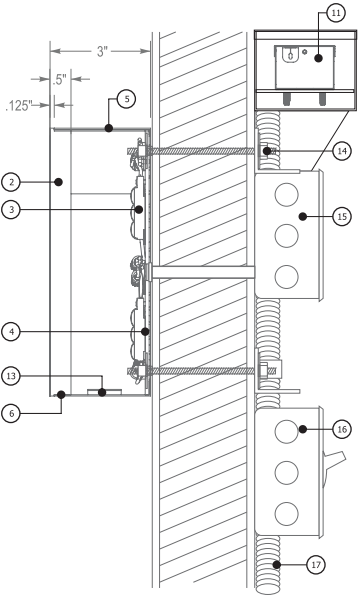
SQUARE FOOTAGE:

Allowed: 2160 sf leased space = Max logo height of 36"
Max sf allowance = 200 sf
Proposed: 2.68 sf

1	NA
2	acrylic face shoulder routed to fit inside returns
3	6500k white LED
4	3mm ACM back
5	.040 aluminum return
6	#4 1/4 undercut countersunk phillips flat head screw
7	NA
8	NA
9	NA
10	NA
11	power supply
12	NA
13	weep hole cover (under side painted black)
14	mounting varies upon wall condition and material
15	junction box
16	disconnect switch
17	primary power source

ELECTRICAL NOTES

1. All materials and fasteners meet 3004.4
2. All electrical components are UL listed, labeled and approved.
3. Sign grounded according to NEC 6007.7
4. Signs manufactured and listed NEC 600.3 and marked per NEC 600.4.
5. All branch circuits per NEC 600 .5(B).1 or (B).2.
6. All Signs controlled by photocell or time clock per FBC 13-415, (ABC).1.4.
7. One visible 20 amp disconnect per sign per circuit per NEC 600.6(A).1



NORTHEAST ELEVATION - Scale: 3/16" = 1'-0"



National Headquarters: 1077 West Blue Heron Blvd.
West Palm Beach, Florida 33404
800.772.7932
www.atlasbtw.com

Revisions:	
01/27/25js rev per markup	...
...	...
...	...
...	...
...	...

S05

PM: Mark B.	Address: #81616 - St Lucie West Blvd.
Drawn By: JS	City State: Port St. Lucie, FL 34986
Date: 01/22/2025	Drawing Number: 169125-S05



Manufacture and install S/F internally illuminated wall sign.

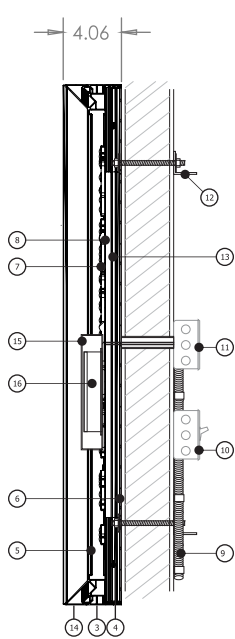
- Illuminated Wall Sign
- Flex Face with Bleed Face Extrusion Construction
- Illuminated with LED
- Face and Return Remove at Once for Service Access

COLORS:

- Face to be 3M white Panaflex substrate
- Vinyl (first surface) 3M 3630-126 Dark Emerald Green
- Returns Painted Pantone 419 Black (satin finish)

SQUARE FOOTAGE:

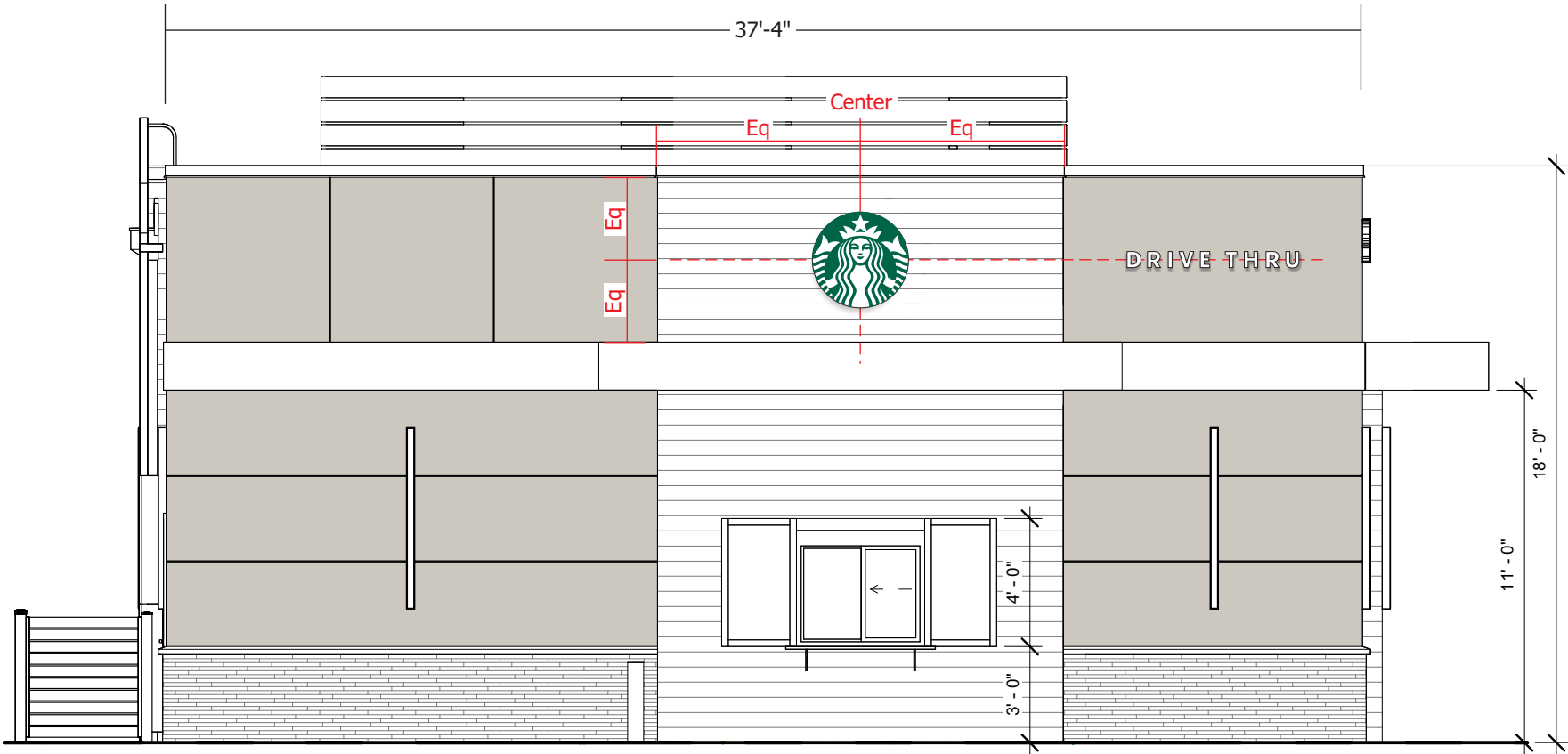
Allowed: 2160 sf leased space = Max logo height of 36"
Max sf allowance = 200 sf
Proposed: 7.06 sf



1	3M vinyl applied to first surface
2	3M Panaflex III flex face material
3	#8 x .5 pan head screw
4	#8 x .75 TEK countersunk screw
5	Sign Comp #2104 retro frame (bleed face) extrusion
6	.125 thick aluminum back
7	Sloan Prism Enlighten #6500 white 12 volt
8	.063 thick aluminum baffle
9	primary power
10	listed disconnect switch
11	junction box
12	mounting varies upon size, wall type & engineering
13	1 x 1 aluminum tube stand off
14	Sign Comp #2123 retro frame cover extrusion
15	power supply box
16	power supply

ELECTRICAL NOTES

1. All materials and fasteners meet 3004.4
2. All electrical components are UL listed, labeled and approved.
3. Sign grounded according to NEC 6007.7
4. Signs manufactured and listed NEC 600.3 and marked per NEC 600.4.
5. All branch circuits per NEC 600 .5(B).1 or (B).2.
6. All Signs controlled by photocell or time clock per FBC 13-415. (ABC).1.4.
7. One visible 20 amp disconnect per sign per circuit per NEC 600.6(A).1



NORTHWEST ELEVATION - Scale: 3/16" = 1'-0"

Revisions:	
01/27/25js rev per markup	...
...	...
...	...
...	...
...	...

PM: Mark B.	Address: #81616 - St Lucie West Blvd.
Drawn By: JS	City State: Port St. Lucie, FL 34986
Date: 01/22/2025	Drawing Number: 169125-S06



7 SB-CL-RMT-DT-W-6
Scale: 1 1/2" = 1'-0"

SCOPE OF WORK:
Manufacture and install internally illuminated channel letters flush mounted to fascia.

- DESCRIPTION:**
- Internally illuminated channel letters with shoulder cut drop in faces and painted satin black returns.
 - Faces to be 1/2" 7328 white acrylic.
 - 1/4" drain holes located at the bottom of letter as required by UL 48 for electric signs.
 - Drain holes to be covered with drain hole covers to reduce light leaks.

COLORS:

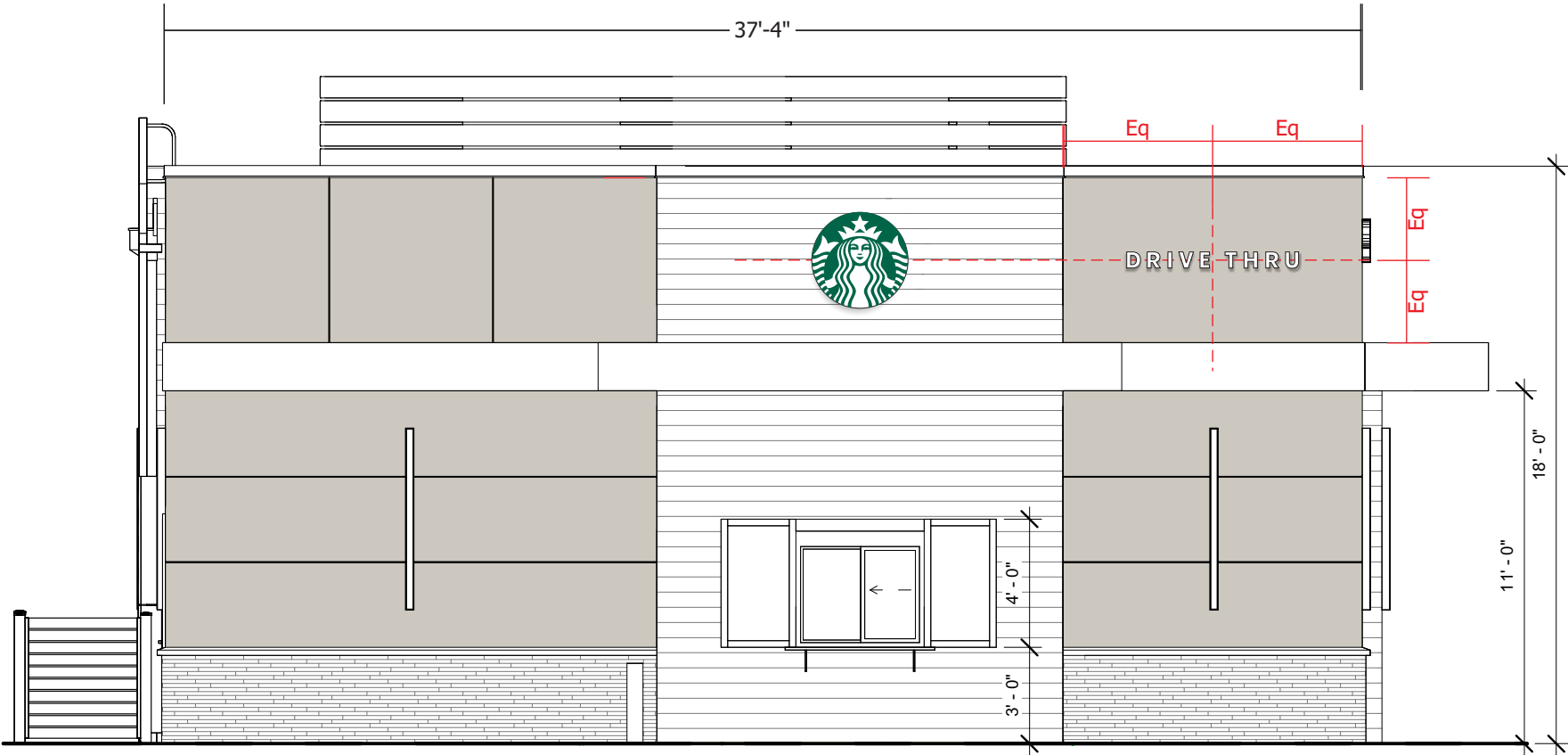
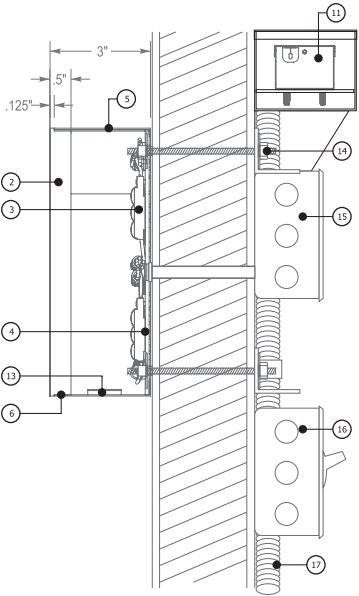
Faces to be #7328 White Acrylic

Returns Painted Pantone 419 Black (satin)

SQUARE FOOTAGE:
Allowed: 2160 sf leased space = Max logo height of 36"
Max sf allowance = 200 sf
Proposed: 2.68 sf

1	NA
2	acrylic face shoulder routed to fit inside returns
3	6500k white LED
4	3mm ACM back
5	.040 aluminum return
6	#4 1/4 undercut countersunk phillips flat head screw
7	NA
8	NA
9	NA
10	NA
11	power supply
12	NA
13	weep hole cover (under side painted black)
14	mounting varies upon wall condition and material
15	junction box
16	disconnect switch
17	primary power source

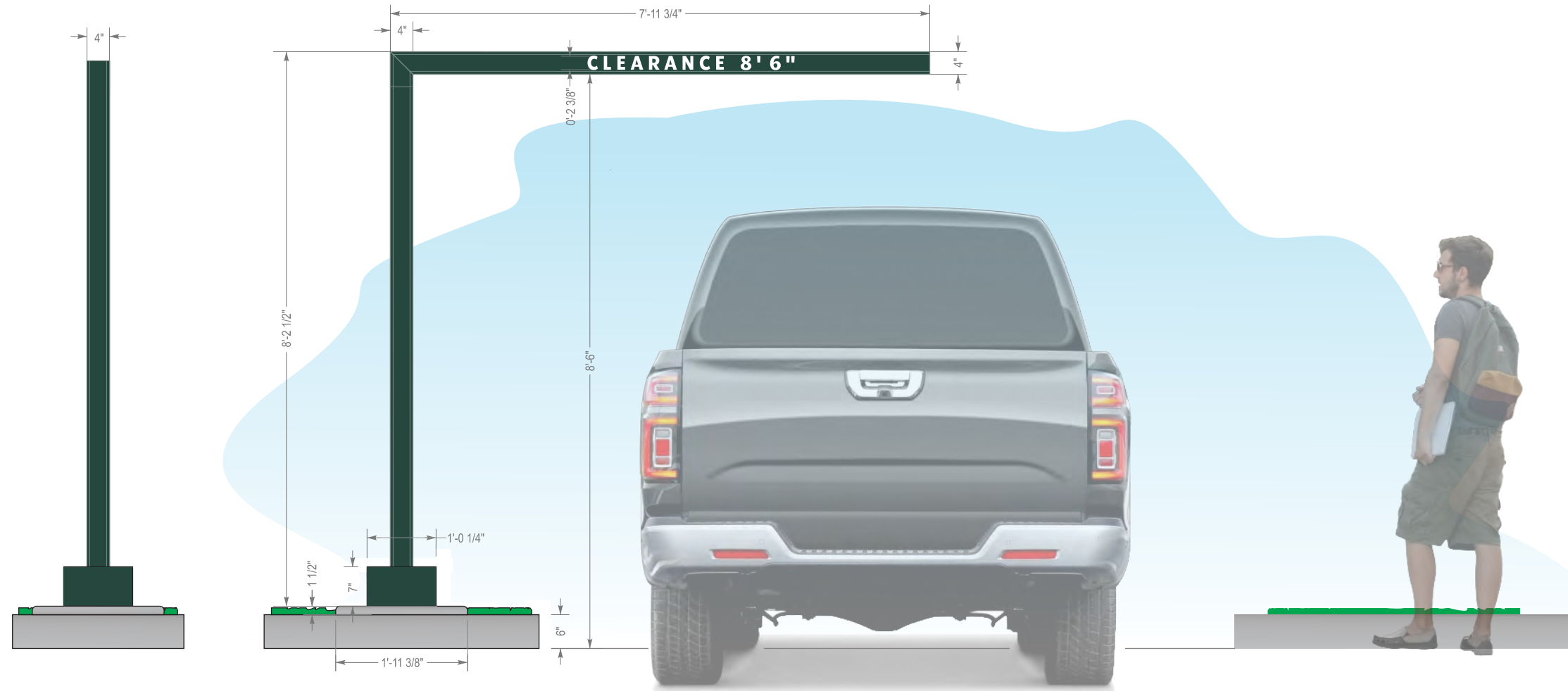
ELECTRICAL NOTES	
1.	All materials and fasteners meet 3004.4
2.	All electrical components are UL listed, labeled and approved.
3.	Sign grounded according to NEC 6007.7
4.	Signs manufactured and listed NEC 600.3 and marked per NEC 600.4.
5.	All branch circuits per NEC 600 .5(B).1 or (B).2.
6.	All Signs controlled by photocell or time clock per FBC 13-415, (ABC).1.4.
7.	One visible 20 amp disconnect per sign per circuit per NEC 600.6(A).1



NORTHWEST ELEVATION - Scale: 3/16" = 1'-0"

Revisions:	
01/27/25js rev per markup	...
...	...
...	...
...	...
...	...

PM: Mark B.	Address: #81616 - St Lucie West Blvd.
Drawn By: JS	City State: Port St. Lucie, FL 34986
Date: 01/22/2025	Drawing Number: 169125-S07



8 DRIVE THRU CLEARANCE BAR
Scale: 1/2" = 1'-0"

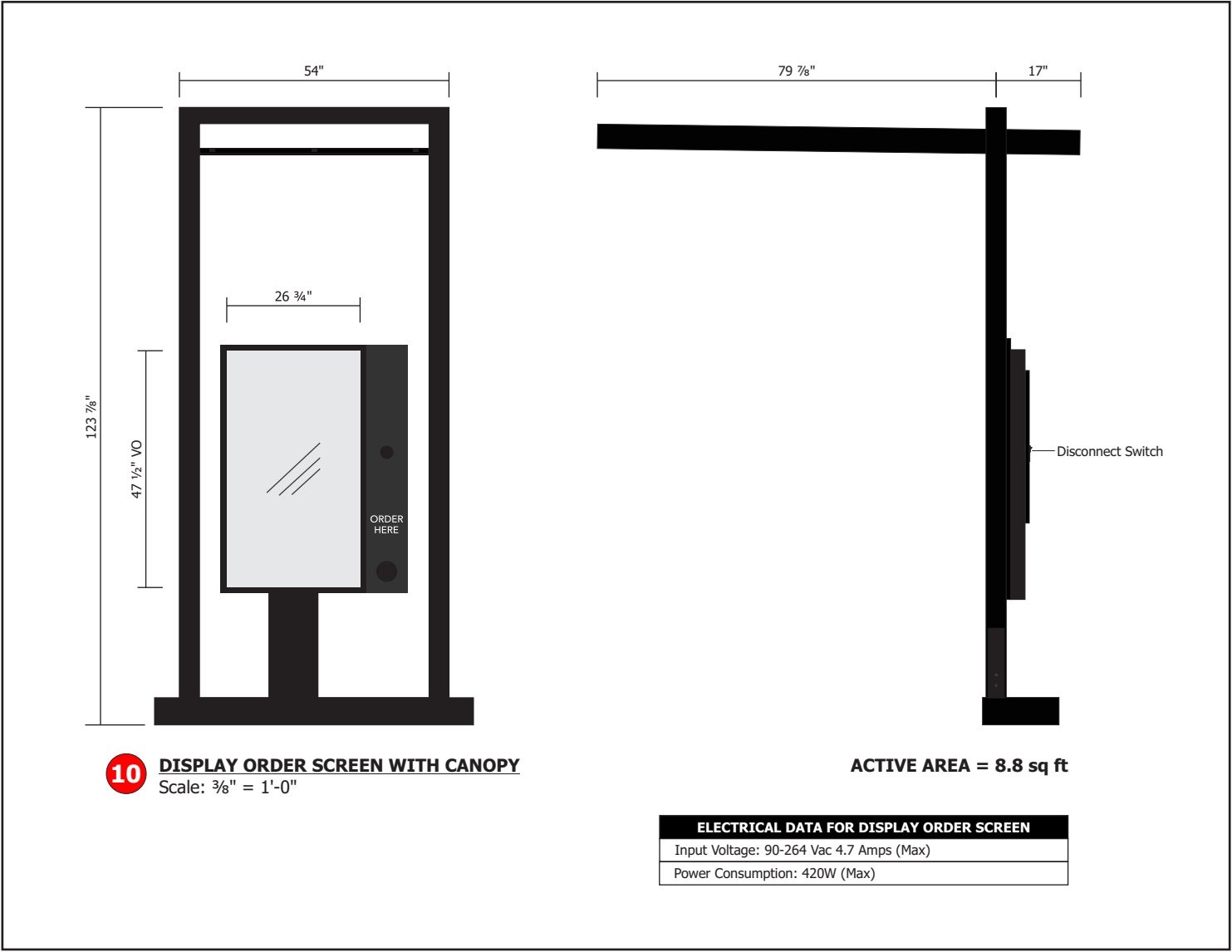
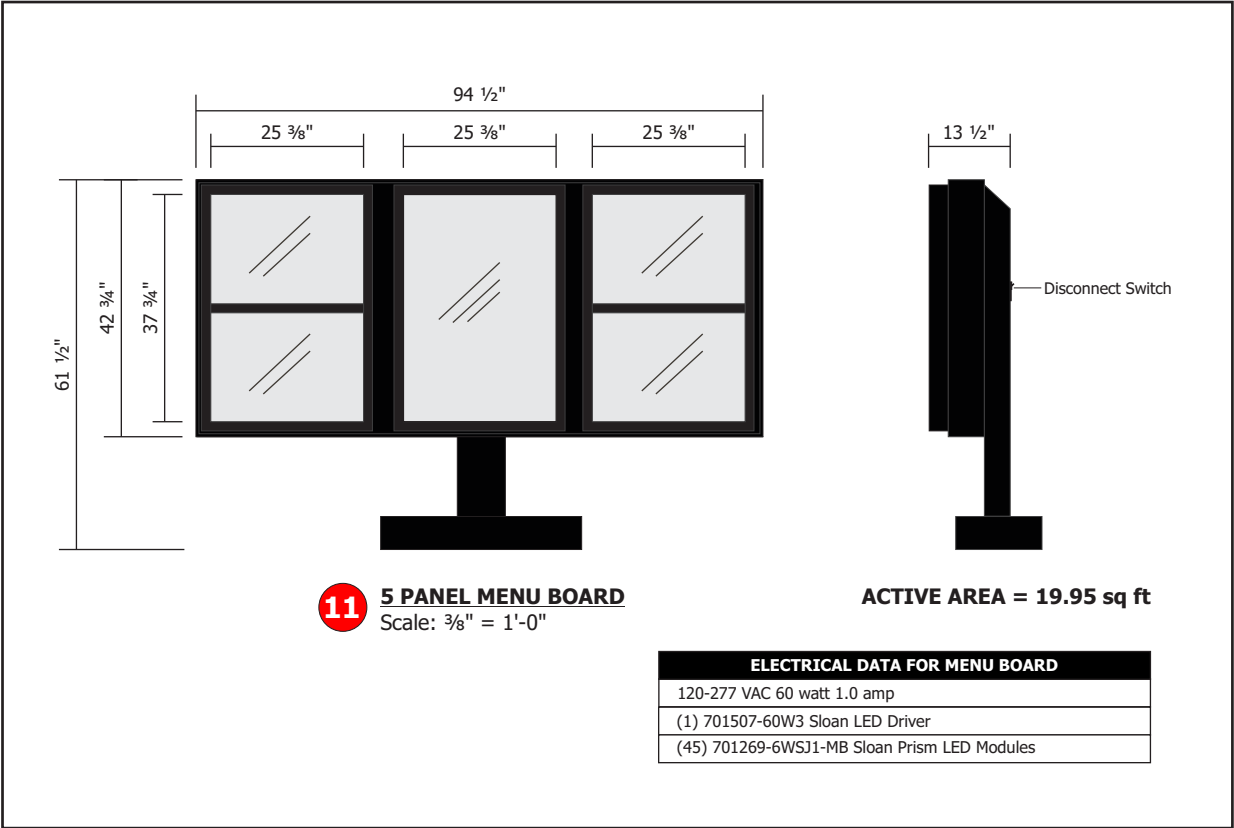
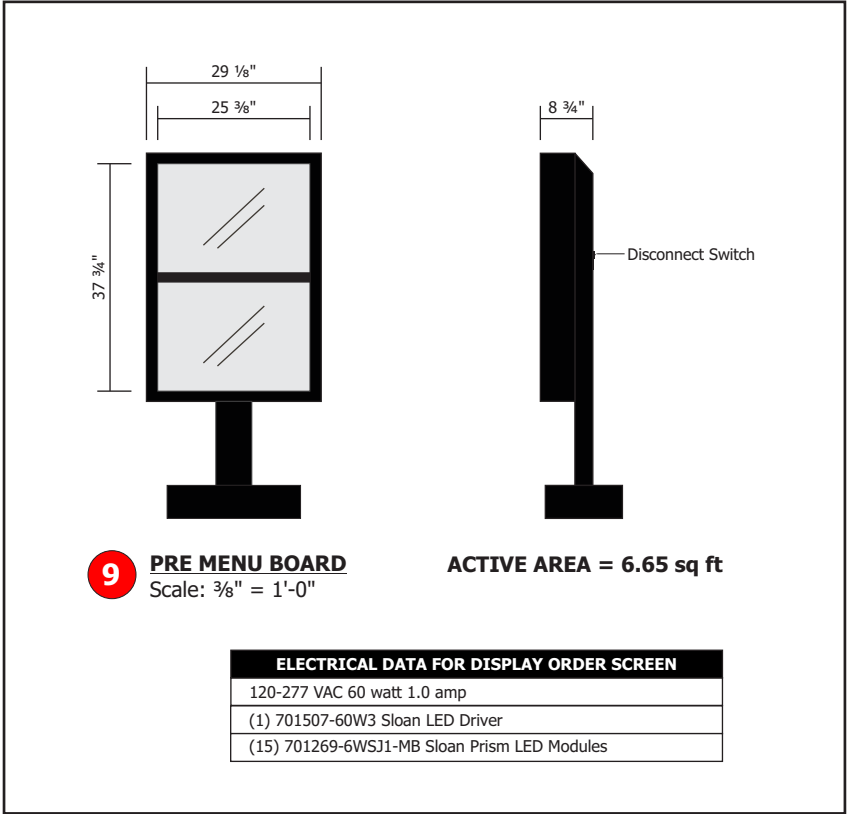
- Steel Construction for main body.
- Brake away action with swinging horizontal bar.
- Structure to be painted with vinyl graphics.
- At junction of vertical and horizontal steel welded miter corner.
- Structure to be connected to a new foundation with plate and leveling nuts.
- Aluminum escutcheon to be fabricated to conceal mounting.
- Foundation to have 1.5" of concrete exposed.

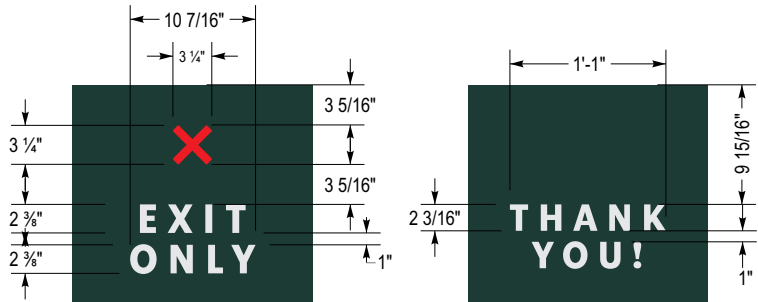
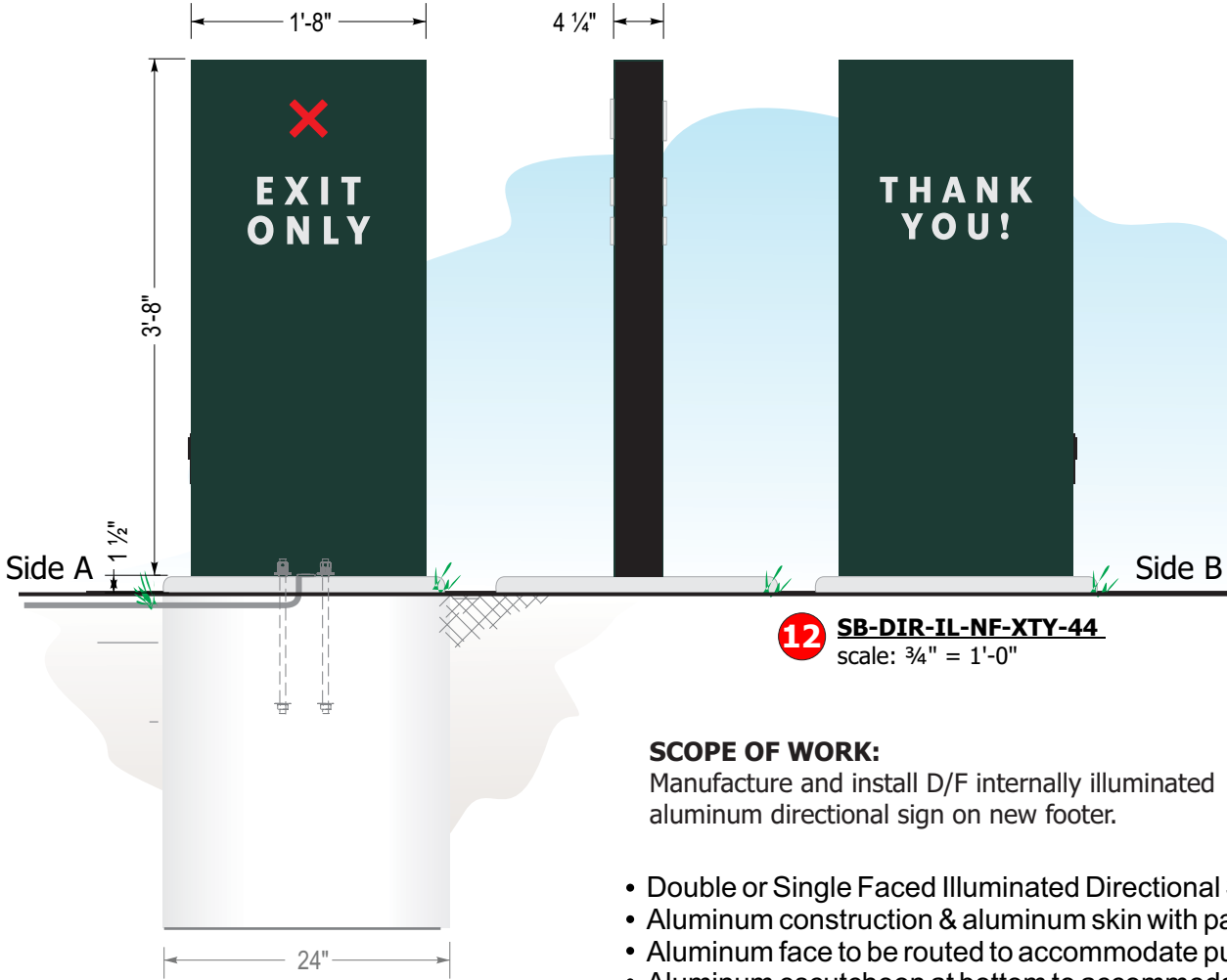
Colors:

- Painted Pantone #560 (satin finish)
- 3M Opaque Block Out Vinyl

SQUARE FOOTAGE:

98.5" x 95.75" = 65.5 Sq Ft





SB-DIR-IL-NF-XTY-44
Side A

SB-DIR-IL-NF-XTY-44
Side B

SCOPE OF WORK:

Manufacture and install D/F internally illuminated aluminum directional sign on new footer.

SQUARE FOOTAGE:
Proposed: 6.11 sq ft

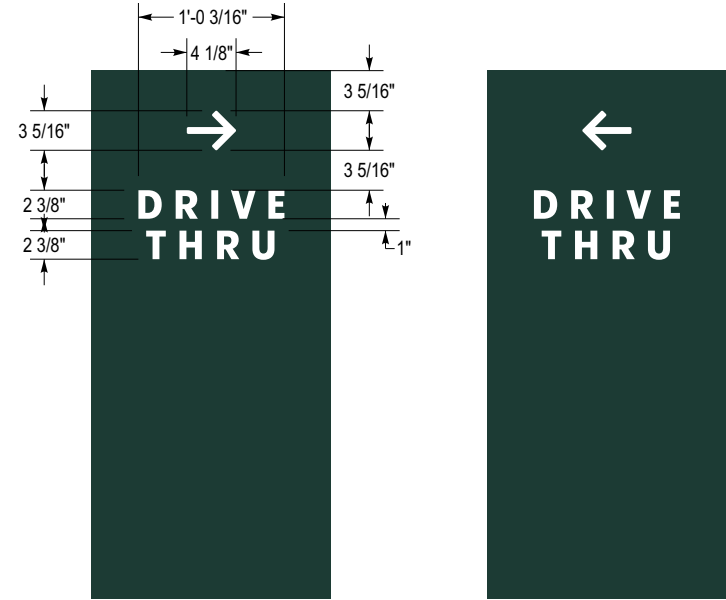
- Double or Single Faced Illuminated Directional Sign.
- Aluminum construction & aluminum skin with painted finishes.
- Aluminum face to be routed to accommodate push thru graphics.
- Aluminum escutcheon at bottom to accommodate bolt pattern.
- Push thru graphics to have 3M vinyl applied to first and second surface.
- Illuminated with white LED modules with all electrical UL listed and labeled.
- Directional to be bolted to concrete footer.

Colors:

- Painted Pantone #560 (satin finish)
- Painted Pantone 419 Black (RAL 7021M) (satin finish)
- Clear Acrylic (push thru)
- 3M 3630-126 Dark Emerald Green Translucent Vinyl (first surface)
- 3M White Translucent Vinyl (first surface)
- 3M Diffuser Film (second surface)
- 3M #3630-33 Red Translucent Vinyl (first surface)

Revisions:	
01/27/25js rev per markup	...
...	...
...	...
...	...
...	...

PM: Mark B.	Address: #81616 - St Lucie West Blvd.
Drawn By: JS	City State: Port St. Lucie, FL 34986
Date: 01/22/2025	Drawing Number: 169125-S12



SB-DIR-IL-NF-DTA-44
Side A

SB-DIR-IL-NF-DTA-44
Side B

13 SB-DIR-IL-NF-DTA-44
scale: 3/4" = 1'-0"

SCOPE OF WORK:
Manufacture and install D/F internally illuminated aluminum directional sign on new footer.

SQUARE FOOTAGE:
Proposed: 6.11 sq ft

- Double or Single Faced Illuminated Directional Sign.
- Aluminum construction & aluminum skin with painted finishes.
- Aluminum face to be routed to accommodate push thru graphics.
- Aluminum escutcheon at bottom to accommodate bolt pattern.
- Push thru graphics to have 3M vinyl applied to first and second surface.
- Illuminated with white LED modules with all electrical UL listed and labeled.
- Directional to be bolted to concrete footer.

- Colors:**
- Painted Pantone #560 (satin finish)
 - Painted Pantone 419 Black (RAL 7021M) (satin finish)
 - Clear Acrylic (push thru)
 - 3M 3630-126 Dark Emerald Green Translucent Vinyl (first surface)
 - 3M White Translucent Vinyl (first surface)
 - 3M Diffuser Film (second surface)

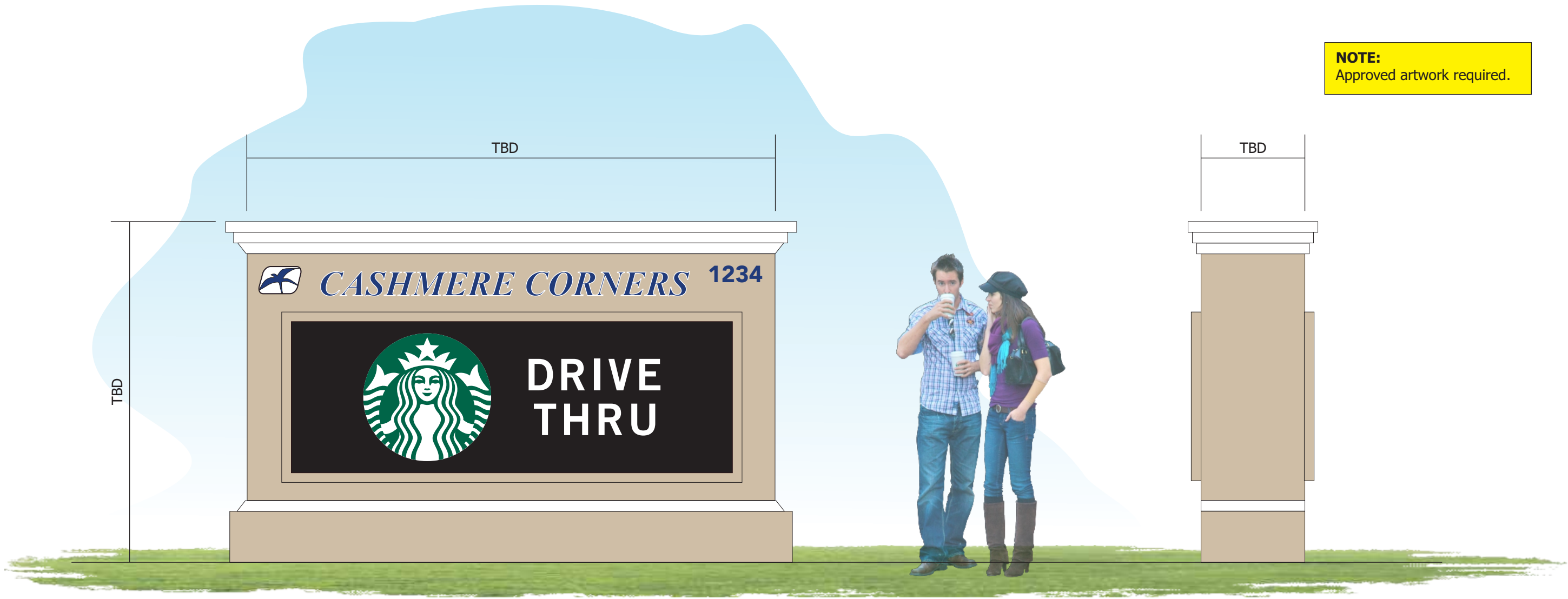


National Headquarters: 1077 West Blue Heron Blvd.
West Palm Beach, Florida 33404
800.772.7932
www.atlasbtw.com

Revisions:	
01/27/25js rev per markup	...
...	...
...	...
...	...
...	...

S13

PM: Mark B.	Address: #81616 - St Lucie West Blvd.
Drawn By: JS	City State: Port St. Lucie, FL 34986
Date: 01/22/2025	Drawing Number: 169125-S13



NOTE:
Approved artwork required.





14 15 Scale: 1/2" = 1'-0"

SIDE VIEW

SCOPE OF WORK:

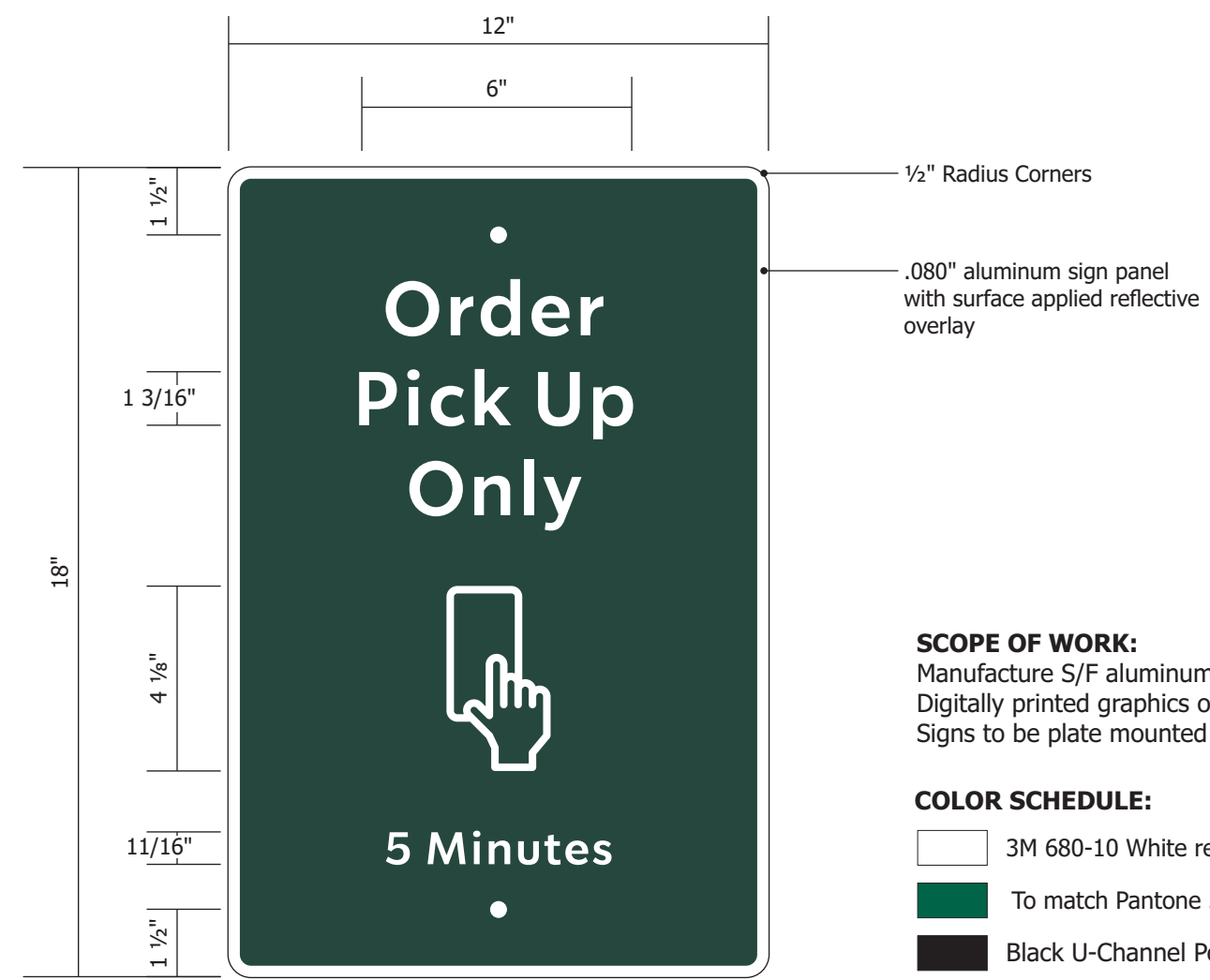
Manufacture and install D/F internally illuminated monument sign. Sign to be of aluminum constructed with tenant cabinets. More info to follow.

COLORS:

-  7328 White Substrate
-  Vinyl (first surface) 3M 3630-126 Dark Emerald Green
-  TBD
-  White Aluminum Accents

Revisions:	
01/27/25js rev per markup	...
...	...
...	...
...	...
...	...

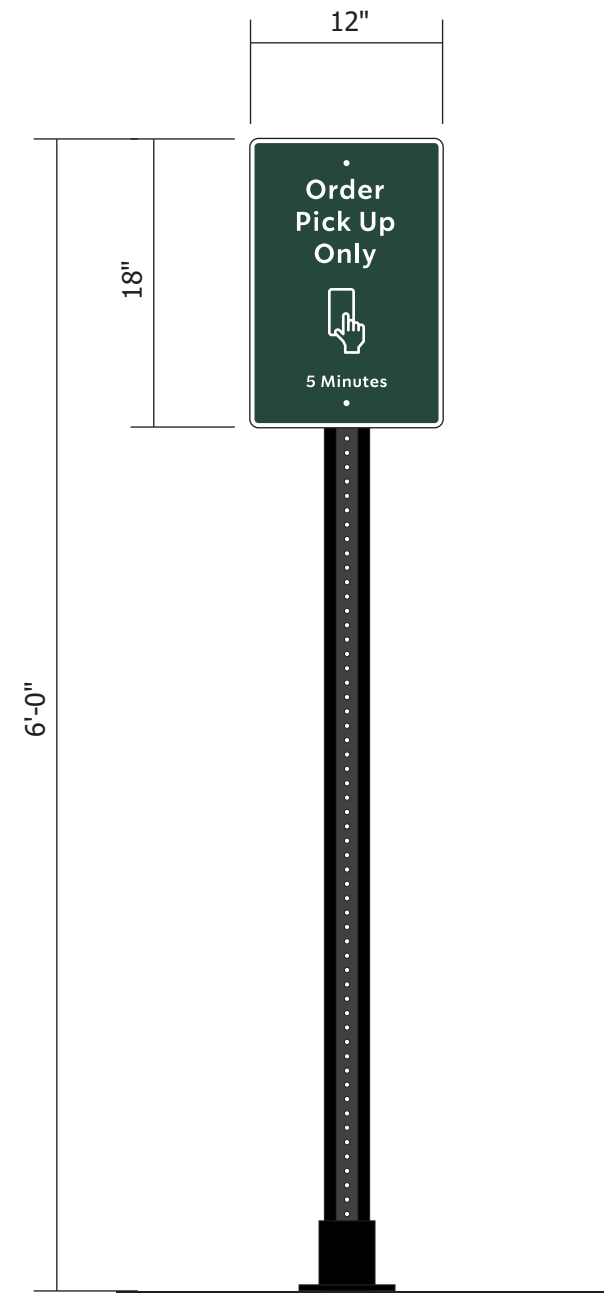
PM: Mark B.	Address: #81616 - St Lucie West Blvd.
Drawn By: JS	City State: Port St. Lucie, FL 34986
Date: 01/22/2025	Drawing Number: 169125-S14-15



SCOPE OF WORK:
Manufacture S/F aluminum parking lot signs.
Digitally printed graphics on white reflective vinyl.
Signs to be plate mounted to concrete sidewalk.

COLOR SCHEDULE:

- 3M 680-10 White reflective vinyl background
- To match Pantone 560 C Green
- Black U-Channel Post



16 17 18 19 Scale: 3" = 1'-0"

Revisions:	
01/27/25js rev per markup	...
...	...
...	...
...	...
...	...

PM: Mark B.	Address: #81616 - St Lucie West Blvd.
Drawn By: JS	City State: Port St. Lucie, FL 34986
Date: 01/22/2025	Drawing Number: 169125-S16-19